

## EA-01: Replace Dock

### SAFETY FIRST

- Follow all Caterpillar facility safety standards when performing this task.
- Place cones at the entrance to the dock to prevent vehicle entry.
- Be sure to notify the truck jockey that maintenance is being performed on the dock.
- It is very important to have the dock adequately supported when working under the dock plate; place the safety post in the safety post cup to brace the plate up and hoist as needed.
- If working in the evening or at night, a flashlight (or other light source) may be needed.
- Wear cotton gloves and a protective suit to protect skin and clothing from dirt and debris.
- A heat hazard occurs when the welded areas are cut.

### EQUIPMENT

- cotton gloves
- lifting eyes
- fork truck with fork extensions
- lifting bar with chains or 4-legged chain
- hook and ring
- straps
- orange cones

### RESOURCES

- none

### Replace Dock

1. **Place the orange cones at the entrance to the dock area to warn drivers that the dock is not available.**
2. **Disconnect the electrical power to the dock.**
3. **Attach the lifting eyes.**



- Release the chain to raise the dock.
- Bolt the lifting eyes to the side plates of the dock.
- Lower the dock to the dock level.

**4. Ask a Welder to cut the back angle.**



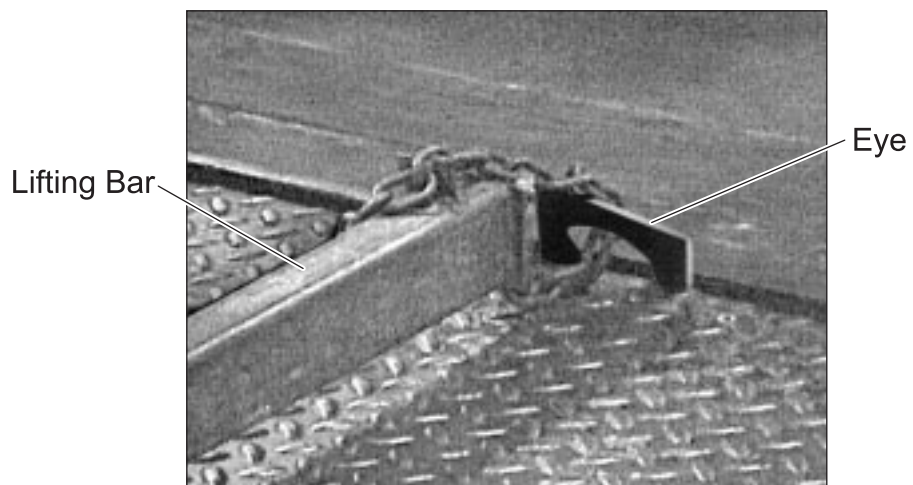
Cut Weld

**5. Secure the dock in the down position.**

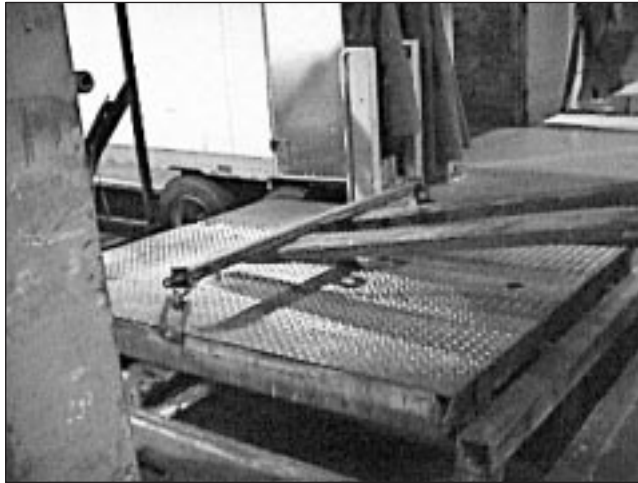
- Lock the dock in the down position.

**6. Remove the dock from the pit.**

- Position the lifting bar across the dock deck.
- Secure the chain on the lifting bar through the eye of the lifting device.



- Move the fork truck into position, sliding the forks under the lifting bar.



- Carefully lift the dock out of the pit. When lifting the dock, pay attention to the dock lock.
- Back the fork truck up and set the dock on a trailer.

**7. Prepare the pit and the dock.**

- Clean all the debris from the pit.
- Grind the weld areas on the back angle and on the floor plate.
- Grind the weld areas on the dock.

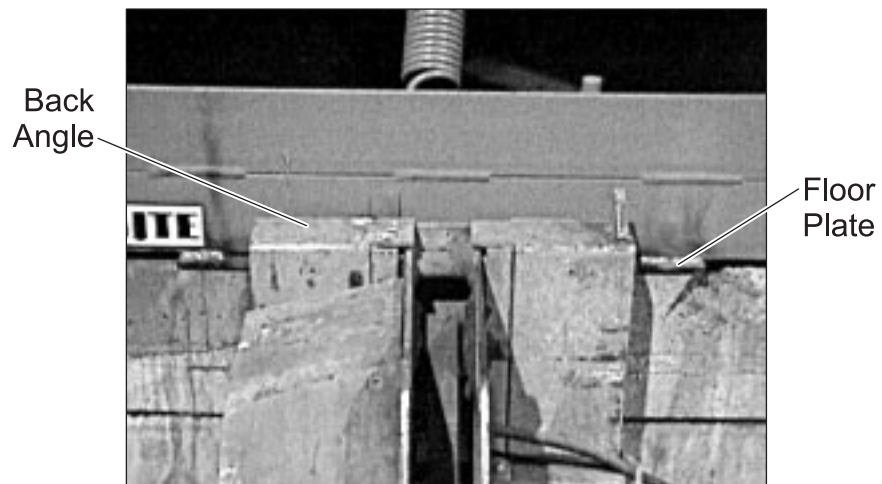
**8. Install the dock in the pit.**

- Carefully set the dock into the pit. Again, pay attention to the dock lock.
- Once the dock is in the pit, position the dock in its original position.

9. **Secure the dock in the pit, making sure that the dock is level on all three sides.**
- Ensure that the shims welded to the dock are secured in place. If not, ask the Welder to weld them in place.



- Ask the Welder to weld the back angle and the floor plate.



10. **Remove the lifting bar and eyes.**
11. **Clean the work area.**
12. **Restore electrical power to the dock.**