

G-11: Troubleshoot Conveyor (Power & Free)

SAFETY FIRST

- Follow all Caterpillar facility safety standards when performing this task.
- An overhead hazard exists due to the rails and track components of the overhead conveyor system. Be careful when raising and lowering the manlift. Practice all safe practices associated with using a manlift.
- A flashlight may be needed due to low lighting.
- A heat hazard exists when working within 10-20 feet of the ceiling during the warm months. Drink plenty of water.
- Watch for pinch points when checking the chain over the sprockets.

EQUIPMENT

- radio
- manlift
- shop towels
- pry bar
- flashlight
- gloves

RESOURCES

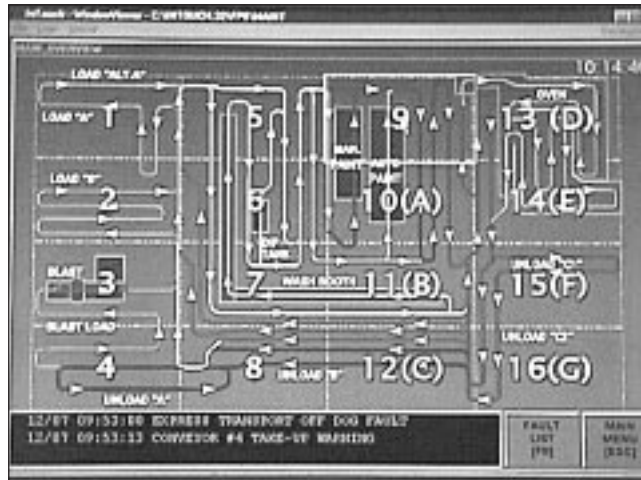
- none



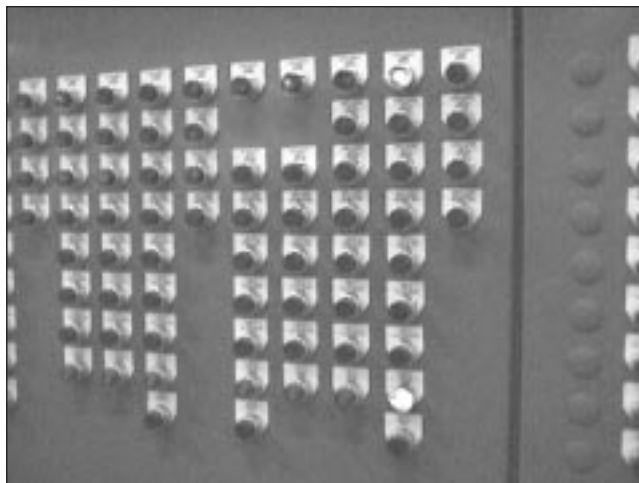
Troubleshoot Conveyor (Power & Free)

1. Determine cause of stoppage.

- Observe the monitor. The monitor displays which line caused the stop.

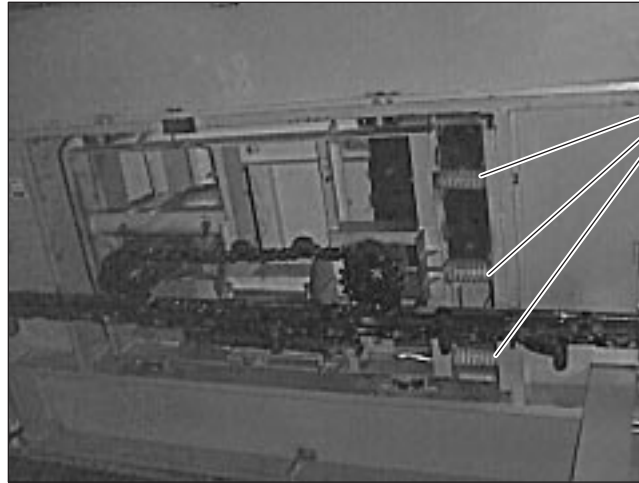


- Observe the blue panel to determine which line has a problem. If a line has a problem, the red indicator lights will illuminate.



2. Check the drive chain springs.

- Observe the springs to determine whether they are compressed. If the springs are compressed, this indicates a stop jam.



Check Springs

- Follow the procedures for clearing a jam.
- If the springs are not compressed, proceed with the following steps.

3. Locate the problem.

- Trace the chain until you come upon the problem. The problem could be a broken wheel, a puller dog wedge in the track, or an off dog fault.

4. Release the brake.

- Ask the Electrician to release the brake. This will release any tension in the chain.

5. Correct the problem.**6. Start the line.**