

## G-36: Clear Jam (Power and Free)

### SAFETY FIRST

- Follow all Caterpillar facility safety standards when performing this task.
- An overhead hazard exists when working around the system.
- Possible injury to maintenance personnel if the air supply is not shut off.

### EQUIPMENT

- pry bar
- protective cloth gloves
- shop towels
- lifting device or manlift

### RESOURCES

- none

### Clear Jam (Power and Free)

**Note: The most common type is the stop jam.**

- 1. Receive notification either from the computer screen, the electrical panel, or marquee. All three will indicate what area the jam is located.**
- 2. Position the lifting device under the jammed carrier.**

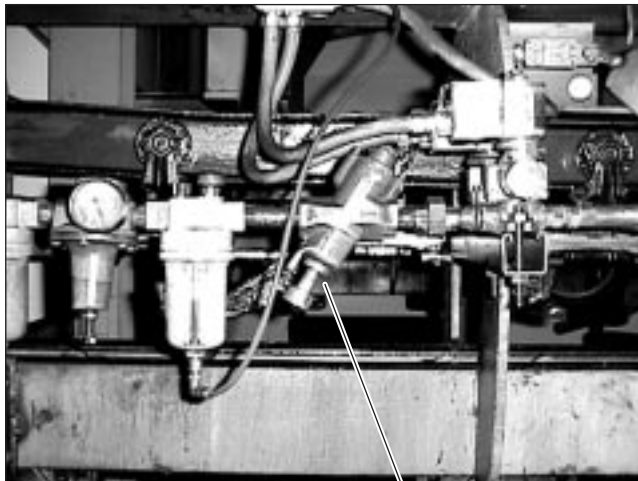
3. **Observe the carrier at the stop to determine that the jam is a stop jam.**



Stop

4. **Turn off the air.**

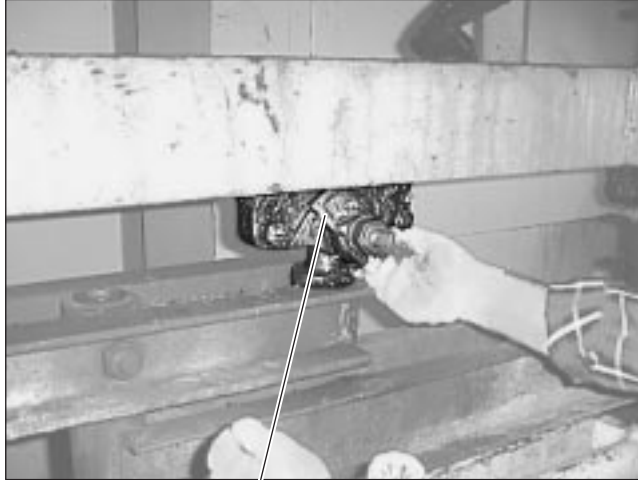
- Push in the air shutoff valve. Turning off the air will allow the stop to move freely by hand, and is the safest way to clear a stop jam.



Air Valve

**5. Release the anti-backup dogs on the carrier.**

- Rotate both anti-backup dogs counterclockwise to allow the carrier to move backwards.

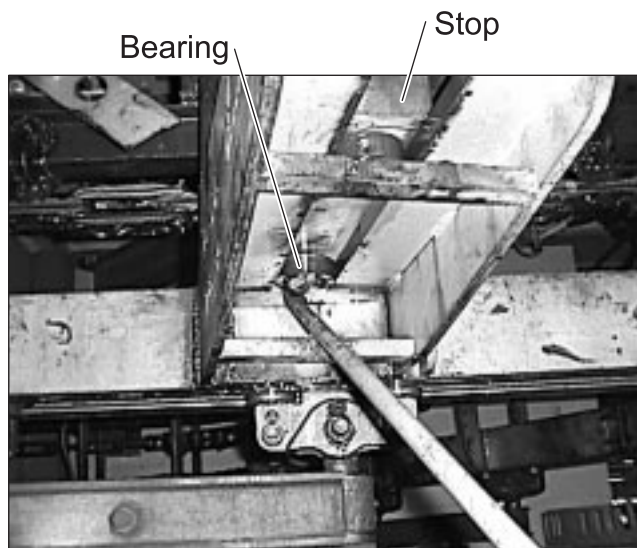


Anti-backup Dog

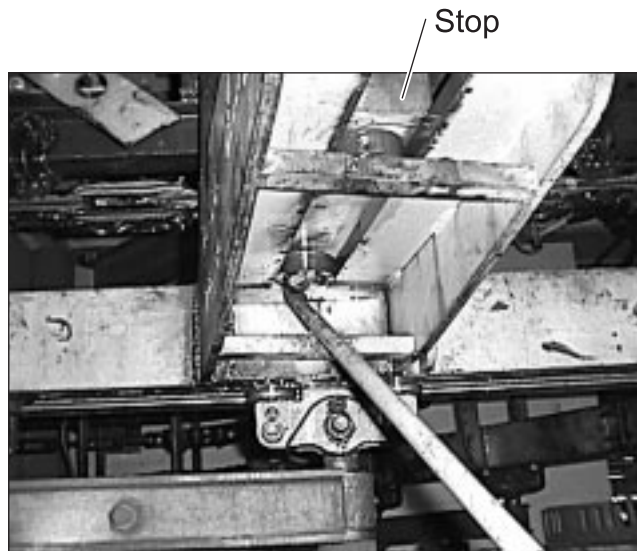
**Note:** There may be several carriers behind the one that is jammed. If so, release the anti-backup dogs on the last carrier and push the carrier back about a foot. Work your way to the jammed carrier. If the anti-backup dogs are not released, the carrier may jump forward.

**6. Ask the Electrician to release the electric brake on the drive chain.****7. Clear the stop jam.**

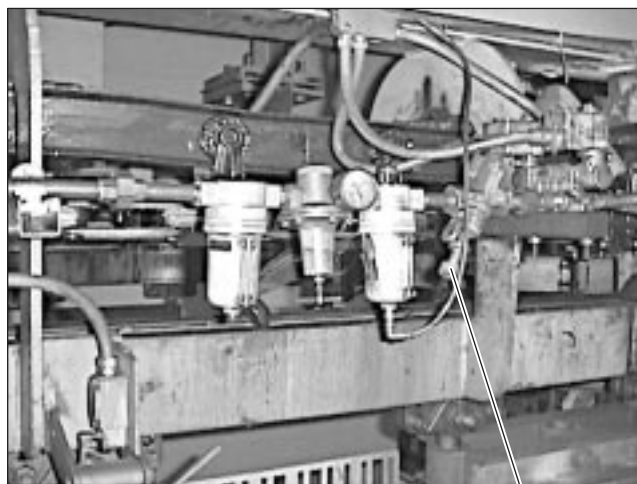
- Position a pry bar between the rail and front bearing.



- Push the stop to the open position. The carrier will roll forward a little; this is normal.



8. **Ask the Electrician to verify the position command of the stop: open or closed.**
9. **If closed, push the carrier back and push the stop to the closed position, and pull the carrier forward to the stop locking the carrier in position.**
10. **Pull the air valve to turn on the air supply.**



11. **Remove the manlift from the path of the chain (safe area).**
12. **Start the line and observe the faulted area.**

